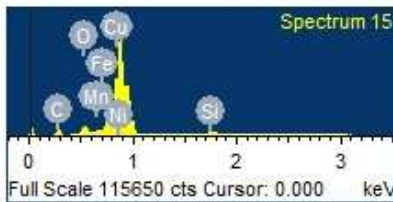
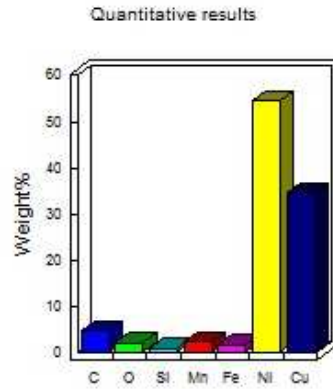
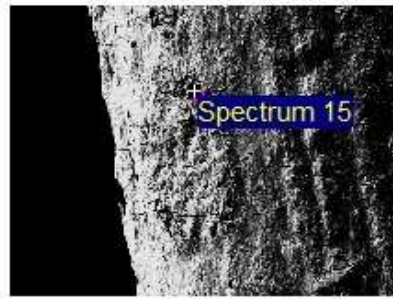
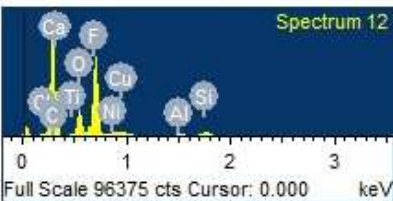
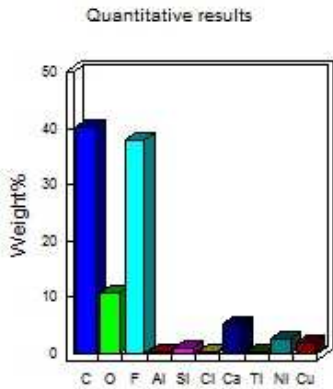
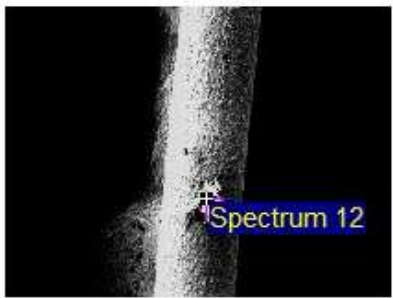
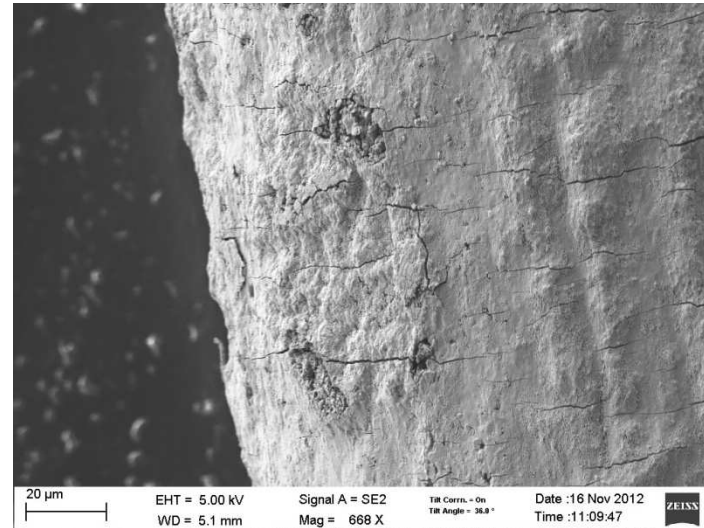


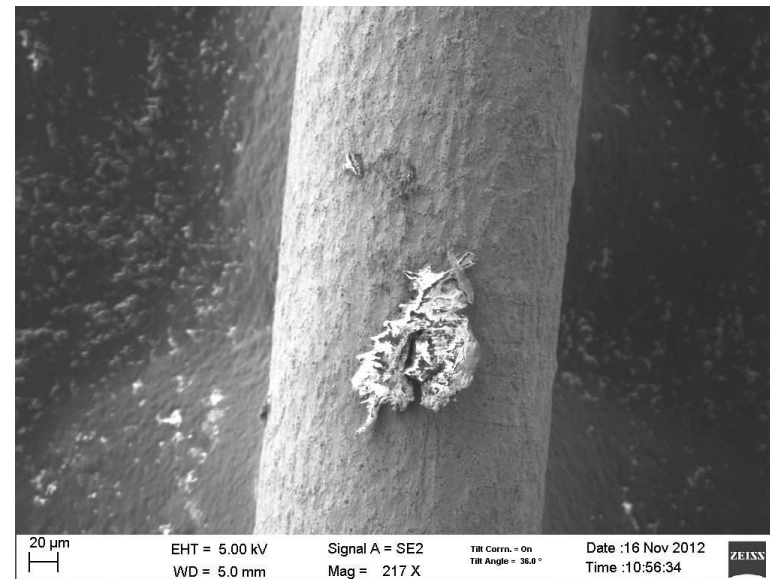
# EDX analysis of 2 layers constantan wire



Comment:  
10kV

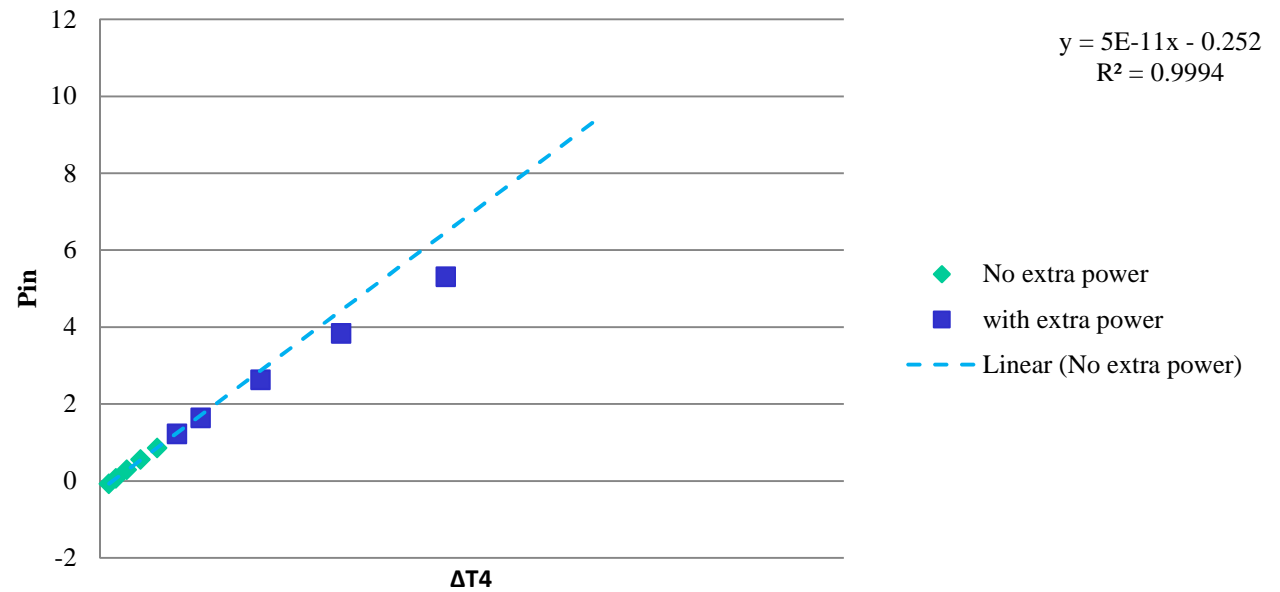


Comment:  
10kV



# Power versus calibration

## Costantan wire test



Temp.	Extra Power
56°C	0
75°C	0
100°C	0
125°C	0
150°C	0
175°C	28 mW
200°C	72 mW
250°C	249 mW
300°C	600 mW
350°C	1.16 W